

CRUSHING & SCREENING

Bucket size

overheating while mobility and stability comes from 4 m long tracks.

ON TRACKS

In certain situations fixed crushing and screening facilities will always hold their own, but there's little doubting that mobile units represent the biggest growth opportunities in the sector.

"There's a trend to mobile machines even though mobile systems are, to a degree, a compromise," said Mark Hezinger, marketing manager at Kleeman. "In particular, we are seeing static systems being replaced by combined mobile units and we see this market developing further."

Kleeman will launch new products at the end of

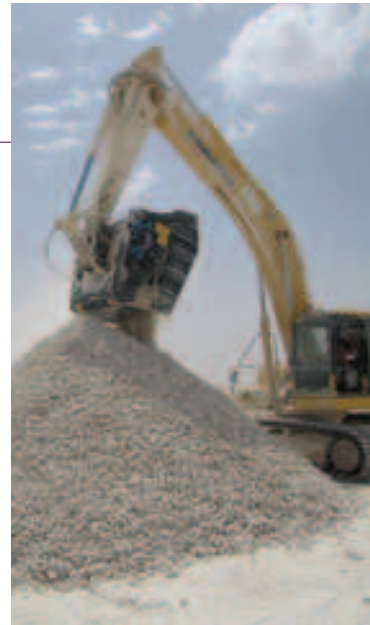
Metso has launched its 58 tonne, 319 kW Lokotrack LT110C preliminary crusher featuring a C110 jaw crusher with a feed opening of 1100 x 850 mm.

THEY MAY BE THE SMALL SIBLINGS OF mobile units, but the market for crushing and screening buckets is growing and so too are the available options.

MB recently launched its smallest bucket crusher yet in the shape of its BF60.1 for excavators of up to 8 tonnes. The addition means the Italian manufacturer now produces a range of crusher buckets for excavators of between 8 and 28 tonnes. The BF60.1 can size material between 20 mm and 100 mm and has a maximum capacity of 0,5 m³.

Allu too launched its new D series fine fragment screening bucket range in April. With the choice of either a 15 disc-in-disc (DiDB) drum or a 25 DiDB drum, the new buckets can screen end product to 15 or 25 mm.

Remu meanwhile offers adaptability with its range, whereby its screenings buckets can be converted to light duty screener-crushers by replacing the classifying rotors with crushing blades. Although not suitable for aggregate production, the screener-crushers are capable of handling tiles and asphalt.



2009 or early 2010. Mr Hezinger told *CE*, "Almost 100 years of knowledge from our stationary systems is being applied to our mobile units. Product knowledge is extremely important, and detail is critical to gain performance."

Pat Brian, global sales director at Terex Pegson and Powerscreen believes flexibility will be key to the future. "Flexibility of equipment and the ability to be flexible are crucial. Even in these difficult times, people are viewing mobile systems as a flexible option."

"We believe this industry has a very bright future. We think the right mobile units with a best in class aftermarket support will be the key to success and, as such, we believe we're well placed to maintain and grow our market position," Mr Brian told *CE*. **ce**

A Kleeman Mobicat MC 120Z mobile jaw crusher and Mobirex MR 130Z mobile impact crusher are being used by LSR Group's OOO Zement in Slanzy on the Russian-Estonian border.

